

Madison's Meadow

4



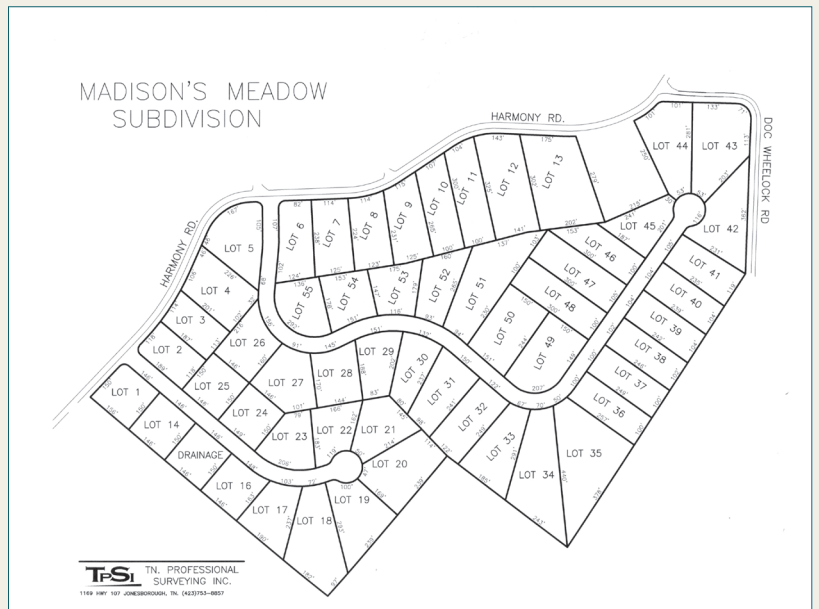
Property purchased in the spring of 2017 by contractors Jason Day and Joe Wilson is now known as Madison's Meadow, a new subdivision conveniently located between Kingsport and Johnson City in the Harmony community.

This new development has 55 restricted lots beginning at \$35K+ and will have 1 and 2 story homes ranging from 300K to \$400K. Square footage requirements are: 1 story homes must have 1400 sq. ft. of heated living area, and 2 story homes must have 1600 sq. ft. with a minimum of 1200 sq. ft. on the first floor. Copies of restrictions are available on site for your review.

Other features include a Home Owner's Association with a low annual fee of \$200. Madison's Meadow is located in the Ridgeview Elementary School district, one of the most desirable and newest schools in Washington County.

To reach Madison's Meadow from Johnson City, take Interstate 26 to the Eastern Star Rd. exit. Cross over Hwy 26 and travel west on Eastern Star Rd. approximately 1 mile. Turn right on Kincheloe Mill Rd., then left on Harmony. This development is approximately 3 miles off Interstate 26.

Madison's Meadow has country appeal with city conveniences. Let us help you find the perfect lot to build your dream home. Call Joe Wilson at 423-444-5678 or Jason Day at 423-791-4458 for more information. Owner/agents.



P.O. Box 4684
Johnson City, TN 37602
423.444.5678

Jason Day
CONSTRUCTION
423.791.4458
"Come see the difference"
JasonDayConstruction@gmail.com